



GMT MONTHLY MEMBERSHIP PROGRESS REPORT

Results as of: 11/30/2017

Multiple District 43

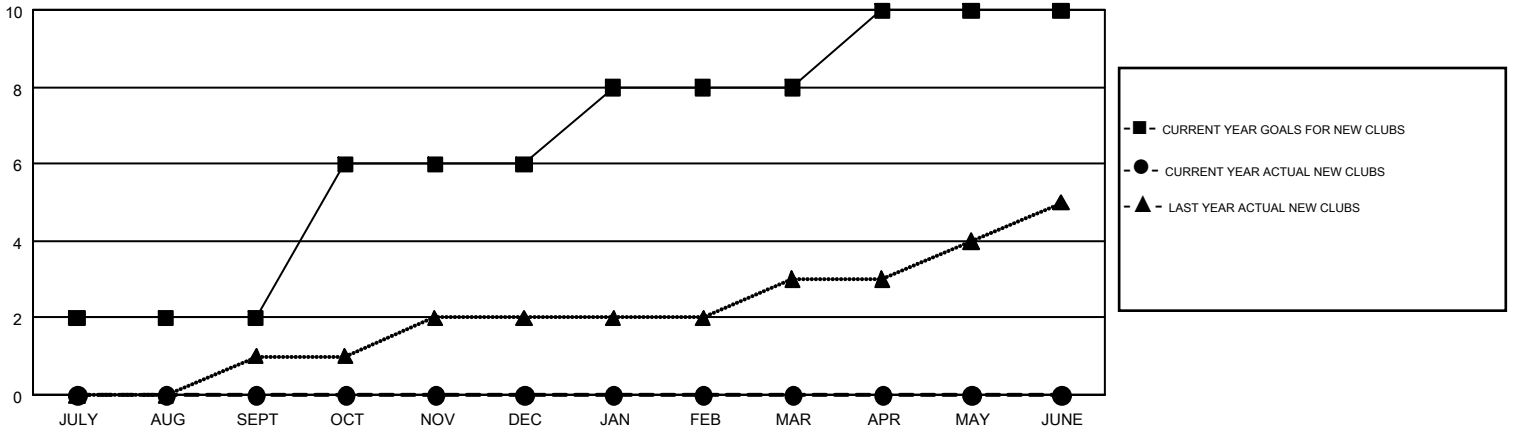
LOCATION: KENTUCKY

GMT: STEVE ANTON

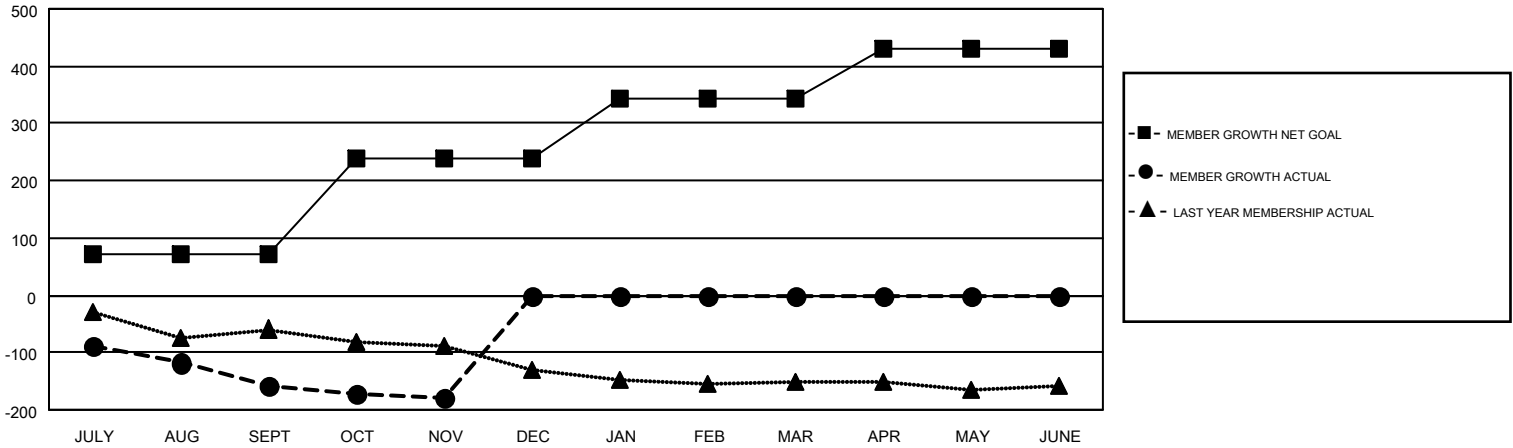
GMT CA 1

Clubs				Members			
RESULTS FOR 2017-2018				RESULTS FOR 2017-2018			
QUARTER	NEW CLUB GOAL	NEW CLUBS	DROPPED CLUBS	QUARTER	MEMBER GROWTH NET GOAL	MEMBER GROWTH ACTUAL	DROPPED MEMBERS ACTUAL (including transfers)
JULY/AUG/SEPT	2	0	3	JULY/AUG/SEPT	73	106	246
OCT/NOV/DEC	4	0	1	OCT/NOV/DEC	165	52	65
JAN/FEB/MAR	2	0	0	JAN/FEB/MAR	106	0	0
APR/MAY/JUNE	2	0	0	APR/MAY/JUNE	87	0	0

GOALS AND ACTUAL NEW CLUBS CUMULATIVE



GOALS AND ACTUAL MEMBERS CUMULATIVE



DROPPED CLUBS: 4	56 CLUBS OF 177 ADDED 1 OR MORE NEW MEMBERS	<u>GENDER DISTRIBUTION</u>	
<u>DROPPED MEMBERS</u>		MALE	3,111 (68.07%)
DECEASED	30	FEMALE	1,459 (31.93%)
CLUB CANCELLED	12	TOTAL FAMILY UNIT MEMBERS	
OTHER	269	944	
TOTAL	311	FAMILY MEMBERS PAYING HALF DUES	
		482	

[CLICK HERE FOR CUMULATIVE MEMBERSHIP DATA](#)